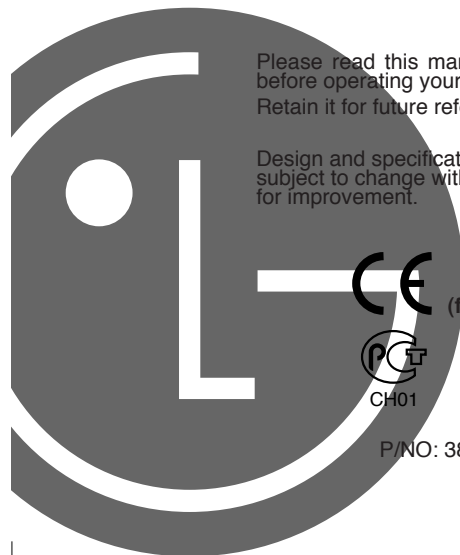




**MP3 PLAYER
OWNER'S MANUAL
MODEL: MF-PD330**



Please read this manual carefully
before operating your set.
Retain it for future reference.

Design and specifications are
subject to change without notice
for improvement.



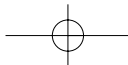
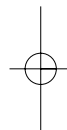
(for CE region)



CH01

P/NO: 3828SNB046B

P/NO: 3828SNB046B





Contents

Warning	3
Precaution	5
Battery Installation	6
What is "MP3 PLAYER"?	7
ACCESSORIES SUPPLIED	10
SYSTEM REQUIREMENTS	11
INSTALLING SOFTWARE	12
CONNECTING DATA IN/OUT CABLE	16
OPEN MP3-Explorer	17
USING MP3-Explorer	18
DOWNLOADING FILES	21
UPLOADING FILES	24
MP3 ERROR MESSAGES	27
BEFORE OPERATING	28
PLAYING MP3 FILES	30
OTHER FUNCTIONS	38
Specifications	39

Warning

To reduce the risk of fire or electric shock, do not expose this appliance to rain or moisture.

	CAUTION RISK OF ELECTRIC SHOCK DO NOT OPEN	
CAUTION TO REDUCE THE RISK OF ELECTRIC SHOCK, DO NOT REMOVE COVER(OR BACK) NO USER SERVICEABLE PARTS INSIDE. REFER SERVICING TO QUALIFIED SERVICE PERSONNEL.		

The graphical symbols marked on the bottom or back of the set mean the following explanation.



The lightning flash with arrowhead within an equilateral triangle is intended to alert the user to the presence of uninsulated "dangerous voltage" within the product's enclosure that may be of sufficient magnitude to constitute a risk of electric shock to persons.



The exclamation point within an equilateral triangle is intended to alert the user to the presence of important operating and maintenance (servicing) instructions in the literature accompanying the appliance.

To avoid electrical shock; do not open the cabinet. Refer servicing to qualified personnel.
Shock hazard-do not open.

CAUTION

Use of controls or adjustments or performance of procedures other than those specified herein may result in hazardous radiation exposure.

Warning

For customers in Europe

This product is conformed to EMC regulation 89/336/EEC and is therefore marked with the CE-label.

Notice for customers in the United Kingdom

WIRING INSTRUCTIONS

This appliance is supplied with a BS1363 approved 3 amp fused mains plug. When replacing the fuse always use a 3 amp BS1362 approved type. Never use this plug with the fuse cover omitted. To obtain a replacement fuse cover contact your supplying dealer or "LG Electronics U.K.Ltd".

If the mains sockets in your home differ, or are not suitable for the type of plug supplied, then the plug should be removed and a suitable type fitted. Please refer to the wiring instructions below:

Warning :

The mains plug severed from the mains lead of this appliance must be destroyed. A mains plug with bared wires is hazardous if engaged in a mains output line socket.

IMPORTANT

The wires in this mains lead are coloured in accordance with the following codes:

Blue : Neutral
Brown : Live

As the colours of the wires in the mains lead of this appliance may not correspond with the coloured markings identifying the terminals in your plug, proceed as follows:

The wire which is coloured brown must be connected to the terminal which is marked with the letter L or coloured red.

The wire which is coloured blue must be connected to the terminal which is marked with the letter N or coloured black.

If a 3 amp BS1363 plug or any other type of plug is used, a 3 amp BS1362 approved fuse must be fitted either in the plug or at the distribution board.

Warning :

Do not connect either wire to the earth pin, marked with the letter E or with the earth symbol \perp or coloured green or green and yellow.

Precaution

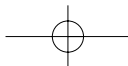
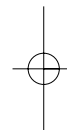
- If you plan not to use the main unit for a long time, remove the battery to avoid any damage caused by battery leakage and corrosion.
- Avoid listening to the main unit while driving, cycling or operating any motorized vehicle.
- Do not use the unit in places which are extremely hot, cold dusty or humid.
- Unlock the HOLD switch before operating.

Battery Life

(The unit of time:hours)

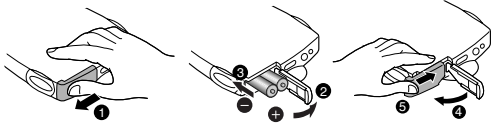
Battery	MP3 Playback
Alkaline battery(2EA)	6~7
Rechargeable battery(1120mA)	6

- ※ Battery life maybe different according to the using condition, manufacture corporation and production years and months.
- ※ Charge the rechargeable battery or replace the battery with a new one in the following situations.
 - ▶ The \square indicator lights.
 - ▶ The operation buttons do not work.



Battery Installation

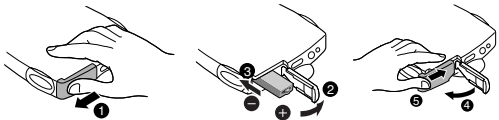
To install the battery(AAA/R6)



Open the battery cover, insert the battery and push lock the battery cover to the direction of the arrow in the NO. ③ position.

To install the rechargeable battery(Optional)

Open the battery cover, insert the battery and push lock the battery cover to the direction of the arrow in the NO. ③ position.

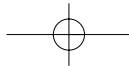
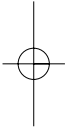


What is “MP3 PLAYER” ?

MP3 Player is a palm size audio device that uses no moving parts for playback and lets you enjoy a high quality sound product that uses MPEG 3 compression method for quality internet audio.

MP3 Player is portable digital audio player that plays MP3 files without requiring the use of tapes or CDs. MP3 Player uses one or two flash memory cards, which is expandable up to 64MB. MP3 is a well known, high quality digital audio format. MP3 files can be compressed up to 12 times the original wave file size. You can get thousands of MP3 files without leaving your home or waiting in long lines in record stores. Just download the files legally from anywhere in the world through your internet connection. You will have to pay for the downloaded MP3 files to the MP3 provider. The files can then be transferred to your player and listened to on your home stereo, in your car, on the beach, or any where you wish to go! Also, you can make your own CD quality MP3 files from CD or WAV making use of the MP3 encoder software.

MP3 Player takes advantage of MP3's small data size and CD quality sound.



What is “MP3 PLAYER”?

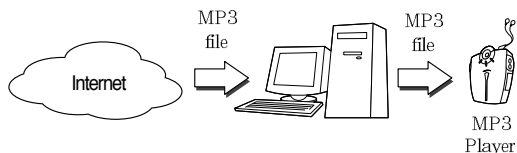
How do I use your MP3 Player?

You'll need to have MP3 files stored on your computer, a data In/Out cable and your MP3 Player.

Using the MP3 Explorer software, select the MP3 files you wish to transfer from your PC to the MP3 Player. You can transfer songs or from your PC to your MP3 Player via your parallel port with a data In/Out Cable. Also, you can transfer data from your MP3 Player to your PC!

A benefit of using MP3 Player for storage of data, windows documents, etc. is that when transferring large data from PC to PC, you can carry an equivalent of more than 40 floppy disks! A floppy diskette can carry only 1.44MB of data, but you can carry up to 64 Mega Bytes of data using your MP3 Player.

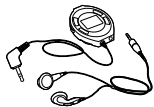
Characteristics-advantages of MP3 Player



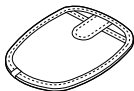
- 1 New generation Digital Audio Player that does not require tapes or CDs.
- 2 Pure sound guaranteed while handling, exercising and jogging.
- 3 Multimedia communication audio player through PC, network and Internet.
- 4 Data storage device when transferring large data from PC to PC.
- 5 Enjoy CD quality sound while listening to MP3 files anywhere.
- 6 You can get thousands of songs at a fraction of CD prices from various MP3 Internet providers via the innovative Try & Buy program without leaving home! You can buy only one song at a time, no more buying a CD for the one or two songs you want.
- 7 You can select your own favorite songs, and change the order of songs whenever you like.
- 8 MP3 Player has no moving parts and will not skip since it does not require physical movement such as rotating Tapes or CDs.

ACCESSORIES SUPPLIED

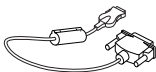
Earphones with remote control



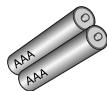
Carrying case



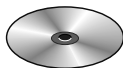
Data In/Out cable
(Parallel cable)



"AAA" Battery



Installation CD



Multimedia card
(MMC)



- ▶ The multimedia card may be damaged by static electricity. Therefore we recommend that you take care of it in your static electricity prevention bag supplied.
- ▶ Keep away the multimedia card from the magnetic substances, because the data of multimedia card may be damaged by it.

SYSTEM REQUIREMENTS

Your MP3 Player needs the minimal system requirements for your computer.

- Windows 95/98
- CD ROM Drive
- 486 or higher microprocessor
- 16MB RAM
- Minimum 7MB hard disk space

You will need more hard disk space depending on the size of the MP3 files you want to download.

Recommended System Requirements

- Windows 95/98
- 586 or higher microprocessor
- CD ROM Drive
- 32MB or higher RAM
- Hard disk space more than 7MB

INSTALLING SOFTWARE

The MP3-Explorer is the communication software that allows your computer to share information with your MP3 Player. In order for your MP3 Player to work properly, The MP3-Explorer software must be installed correctly under Windows.

The MP3-Explorer software is available for Windows®95/98, but it's not available to NT™.

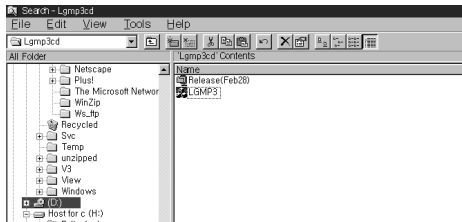
Installing Automatically

Insert the software CD into drive D:\ (where 'D:\' is name of your CD ROM drive). And the install will be run automatically. Continue installing as the direction of dialog boxes.

Installing Manually

If automatic installing is not run, try manual installing as following description.

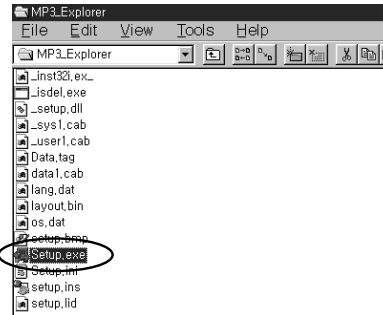
- 1 Insert the software CD into drive D:\ (CD ROM drive).
- 2 Click D:\ drive (CD ROM drive)



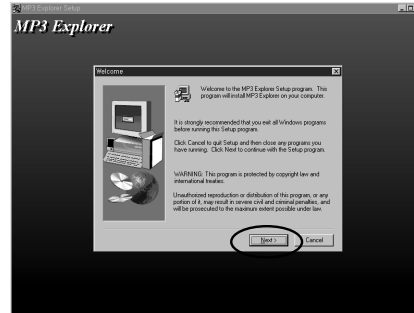
12

INSTALLING SOFTWARE

- 3 Double-click Setup.exe file.



- 4 Click 'Next' button.



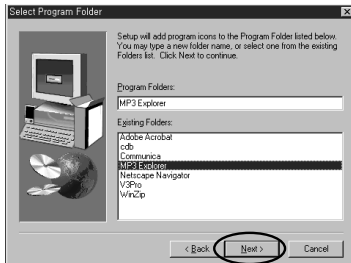
13

INSTALLING SOFTWARE

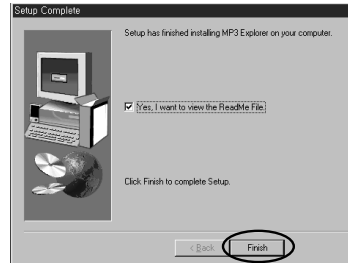
- 5 Click 'Next' button.
C:\Program Files\MP3-Explorer directory will be created.



- 6 Click 'Next' button.



- 7 Click 'Finish' button.

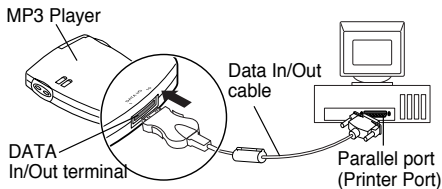


The installation of MP3-Explorer software is completed and the MP3-Explorer icon is created on the Windows desktop.

CONNECTING DATA IN/OUT CABLE

Connecting your MP3-Player to a PC

To complete setup, you should connect the supplied Data In/Out cable to a PC from your MP3 Player.

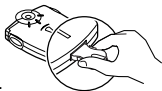


Compare the two ends of the cable

- 1 Disconnect the printer cable from your PC.
- 2 Put your MP3 Player to stop mode.
- 3 Open the rubber cover of Data In/Out terminal from your MP3 Player.
- 4 Connect one end with the parallel port on the back of your PC and then plug the other end into the Data In/Out terminal of your MP3 Player.

NOTE

To remove the plug of the MP3 Player side, push and pull both grips of the plug.



OPEN MP3-Explorer

The MP3-Explorer is the software that interacts with the MP3 Player and a PC. MP3 files or any data files can be downloaded to the MP3 Player or vice versa.

- 1 Double-click the 'MP3-Explorer' icon on the Windows desktop.



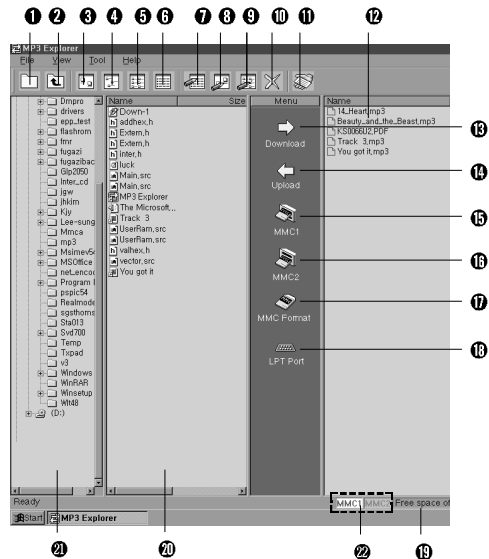
- 2 In case of first run after the MP3-Explorer installation, the "Parallel port" Options dialog box will be displayed.



- 3 To communicate between your MP3 Player and your PC, you must select the "Parallel Port" option. The default port is set to LPT1. Make sure your MP3 Player is properly connected to the Parallel Port of your PC with the supplied Data In/Out cable.
- 4 The first time you open the MP3-Explorer after setup, if it does not run, check the LPT MODE of the CMOS SETUP of your PC. And confirm if it is SPP MODE (STANDARD or OUTPUT ONLY).
* You can check the LPT MODE during the booting of your PC. Press 'DEL' key during booting of your PC to enter the CMOS SETUP and then enter to the MAIN MENU → ADVANCED SYSTEM SETUP → INTEGRATED PERIPHERALS → LPT MODE (It may be different according to your PC, refer to User's Manual of your PC)

USING MP3-Explorer

The following figure describes the MP3-Explorer software. The various features are explained below.



- ① **'New Folder' button**
It creates the new folder.
- ② **'Upper Folder' button**
Move to upper folder.

- ③ **'Large Icons' button**
Display the items to the large icon.
- ④ **'Small Icons' button**
Display the items to the small icon.
- ⑤ **'List' button**
Display the items in the directory or folder name only.
- ⑥ **'Detail' button**
Display the information of the icons in the display panel.
- ⑦ **'Refresh' button**
Change the information of the folder in the display panel.
- ⑧ **'Rename' button**
Changes the name of the selected item.
- ⑨ **'Mask File' button**
Displays only the files of the selected information.
- ⑩ **'Delete' button**
Deletes the selected item.
- ⑪ **'About MP3 Explorer' button**
Displays the MP3-Explorer software information.
- ⑫ **'MMC Files' display panel**
Display panel for the data or MP3 files of the selected multimedia card.
- ⑬ **'Download' button (PC to MP3 Player)**
This button will allow you to copy the selected MP3 files or data on the PC in the local folder onto your MP3 Player. Approximately, the time spent on the copying process would take about two or three minutes to copy a 4MB file into your MP3 Player. The download time may vary depending on your PC.

14 'Upload' button (MP3 Player to PC)

The Upload button works the same as the Download button, but uploads information to the PC instead. This will allow you to copy the selected MP3 files or data on the MP3 Player (Multimedia card) into the local directory as a destination folder. The time spent on the copying process from the MP3 Player to a PC is much slower than the download process.

15 'MMC1' button

Select the MMC1 of the MP3 Player. If you press MMC1 button, the MMC1 files are displayed.

16 'MMC2' button

Select the MMC2.

17 'MMC Format' button

Format button for the selected MMC1 or MMC2.

18 'LPT Port' button

You can redefine the parallel port.

19 'MMC Free Space' display

Displays the selected MMC space.

20 'PC Files' display panel

Select the MP3 files or other files of the selected directory or folder on your PC.

21 'PC Directory' display panel

Select the directory or folder where MP3 files or other files that you want to copy onto the MP3 Player (Multimedia card) are located.

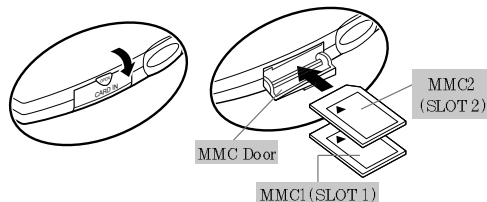
22 'MMC1 or MMC2 select display

If the MMC is loaded in your MP3 Player it is displayed in green or white colour. The selected MMC number is changed in green colour.

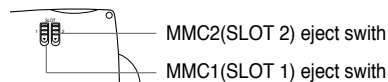
To download the MP3 files or data files from PC to MP3 Player, try as the following descriptions.

Preparation

- 1 Insert the battery into the MP3 Player.
- 2 Put MP3 Player to the stop mode. (While the MP3 Player is operating you cannot download or upload)
- 3 Open MMC door and load the MMC 1/2.



- To eject MMC, open the MMC door and pull the MMC1/2 eject switch to the lower part.



- 4 Connect the MP3 Player and your PC with the Data In/Out cable.

DOWNLOADING FILES

To download files

5 Buy and store the MP3 files on your PC from the Internet site, CD ROM etc.

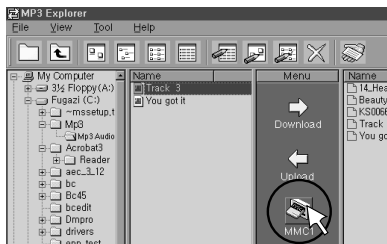
6 Double-click the 'MP3-Explorer' icon to run the software.
(If the remote controller is inserted into the MP3 Player, 'PC' appears on the remote control display)



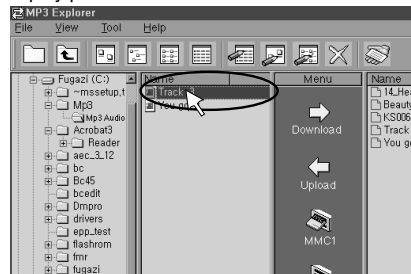
NOTES

- ▶ Connect the Data In/Out cable before running the software.
- ▶ In Data In/Out cable connecting status, if you run the MP3-Explorer all the buttons of the player are inoperative.

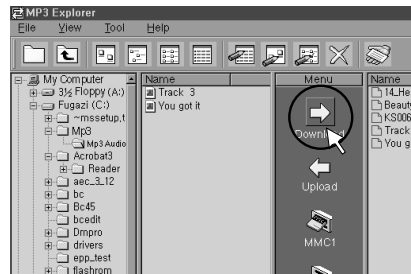
7 Click MMC1 or MMC2 button to download.



8 Display the MP3 files or data files on the 'PC Files' display panel and select a file.



9 Click Download button of the Menu bar. It will be downloaded into the selected MMC1 or MMC2.

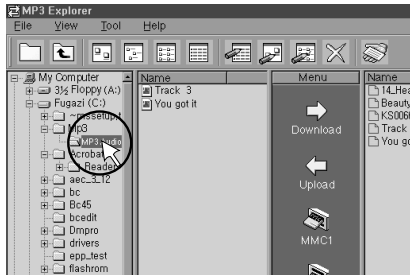


UPLOADING FILES

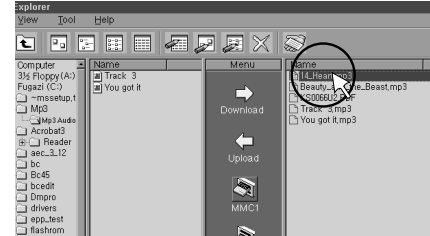
To upload the MP3 files or data files from MP3 Player to PC, try as the following descriptions.

To upload files

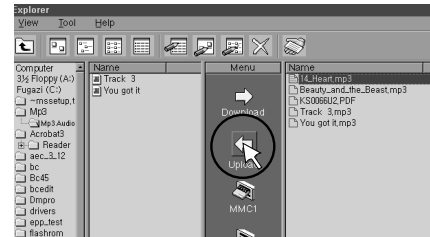
- 1 Select a directory or folder on the 'PC Directory' display panel.
(The files of the selected directory or folder will be displayed on the 'PC Files' display panel)



- 2 Click MMC1 or MMC2 button and select a MP3 file or data file on the 'MMC Files' display panel to upload.



- 3 Click the 'Upload' button and the selected file(s) will be uploaded into the selected directory or folder of your PC.



UPLOADING FILES

NOTES

- ▶ Before disconnecting the Data In/Out cable after upload or download, close the MP3-Explorer.
- ▶ If there is no battery in the MP3 Player or battery supply is insufficient, you cannot upload or download. At this time the warning message will be displayed on the desktop. At this time close the MP3 Explorer and then disconnect the plug of the Data In/Out cable for the MP3 player and exchange the batteries with new ones.

Information about MP3 files service site

musici.channeli.net (<http://musici.channeli.net>)

[MP3.com](http://www.mp3.com) (<http://www.mp3.com>)

[MP3-2000.com](http://www.mp3-2000.com) (<http://www.mp3-2000.com>)

[MP3now.com](http://www.mp3now.com) (<http://www.mp3now.com>)

MP3 ERROR MESSAGES

The followings are major error messages which may be displayed while using MP3 Explorer.

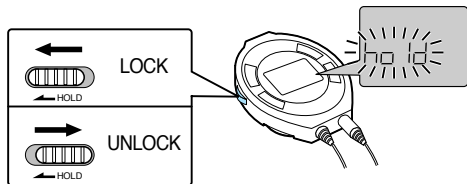
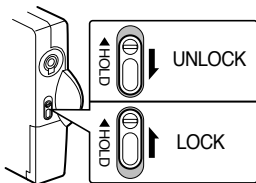
Error Messages	Check Points	Solutions	Remarks
Player isn't ready .	1) Is the cable connected correctly?	▶ Re-insert the cable correctly.	After solving the problem, press the [retry] button, or exit MP3 Explorer and run it again.
	2) Is the player stopped?	▶ Stop the player.	
	3) Is the battery not installed, or is the battery low?	▶ Replace the battery with new one.	
Not initialized.	1) Check that the card is inserted correctly.	▶ Insert the card correctly.	After inserting, press [OK] or [MMC] button to detect the card again.
	2) Is the cable connected correctly?	▶ Re-insert the cable correctly.	Exit MP3 Explorer and run it again.
Not enough space in MMC.	Is the size of the file to be downloaded larger than the remaining space in MMC?	▶ Replace the card, or remove files in MMC, and then retry.	
MMC isn't formatted.	MMC is not formatted. Format MMC, please.		

BEFORE OPERATING

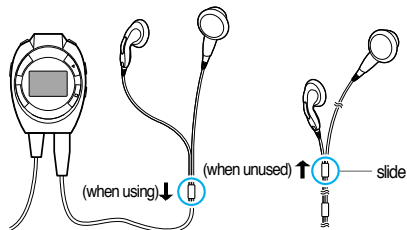
HOLD

The hold function locks the main unit and remote control separately to prevent them from operating when you accidentally press a button. Unlock it before operating.

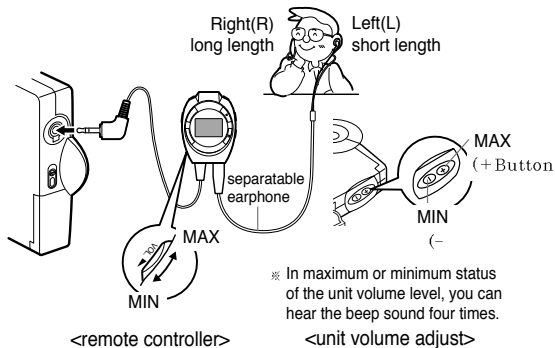
※ If you set the HOLD to lock position or press a button on the remote control in lock position, the "hold" will blink 5 times.



Using Earphone



- 1 To prevent getting the earphone cord tangled, raise the slide.
- 2 You can attach the remote controller with the clip on the rear of the remote controller.

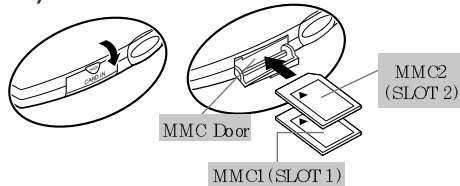


※ In maximum or minimum status of the unit volume level, you can hear the beep sound four times.

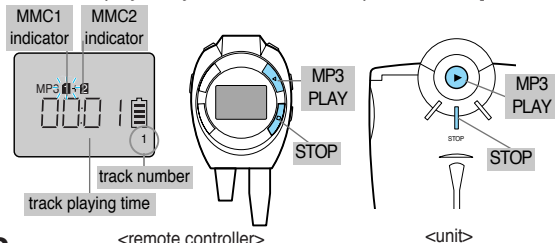
PLAYING MP3 FILES

To play a MP3 file

- 1 Open the MMC door and load the multimedia card 1 or(and) 2.



- 2 Press MP3 button to play MMC1 [flashes on the display and you can hear the beep sound one time] If you want to play the MMC2, press the MP3 button one more time [flashes on the display and you can hear the beep sound twice]



- 3 MP3 files of the MMC1 or MMC2 will be played repeatedly until you press the STOP button.
- 4 To stop play, press STOP button.
- 5 If you resume play the MP3 file from the stop status, it is played from the stop point.

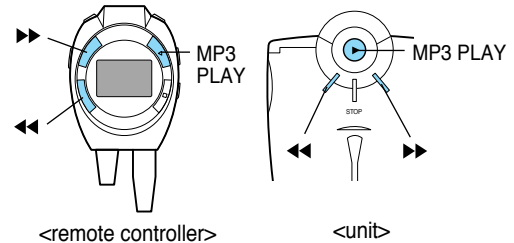
TIPS

- ▶ Extensions of files playable in MP3 Player.
 - Files whose extension is MP3 (*.MP3)
 - Files whose extension is GU3 (*.GU3) among encrypted MP3 files (If you download the encrypted files into PC through DIGICAP service on the Internet or PC networks, their extensions will be changed to *.CA. If you download these *.CA files into MMC of the MP3 player through MP3 Explorer, their extensions will be changed to *.GU3.)
- ▶ “MMC1/2” indicator appears in the display only when playing MP3.
- ▶ If there is no card when playing, the number of corresponding MMC doesn't appear in the display.
- ▶ If there is no card, or you try to play a card with no MP3 file, the alarm beeps 4 times.

PLAYING MP3 FILES

NOTES

- 1 MP3 Explorer is the application which is used to download into a portable MP3 player and play any music file with extensions of MP3 (*.mp3) or CA (*.ca) stored in PC. If you download any music file whose extension is CA, it detects the ID of multimedia card (MMC), changes its extension to GU3, and saves it. It is to protect against unauthorized reproduction, which is required by the organizations related to copyrights of music. You can play the downloaded music file with the extension of GU3 in the MP3 player with the sound quality of CD level. The music files with the extension of GU3 stored in this multimedia card can be played in any MP3 players made by LG Electronics Inc. But, in case you upload the music file with the extension of GU3 onto PC, you cannot play the music file.
- 2 If you upload onto PC any GU3 (*.GU3) file which has been downloaded into an MP3 player, and then, download it into another card, it will not be played or playback will be broken up, due to the reproduction prevention lock.



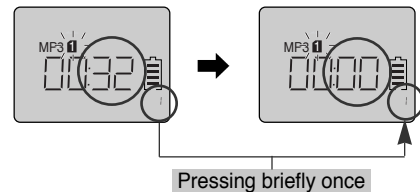
Skipping to the beginning of a track

You can locate the beginning of any track on a MMC1 or MMC2.

Press the ►► or ◀◀ button during MP3 file playing.

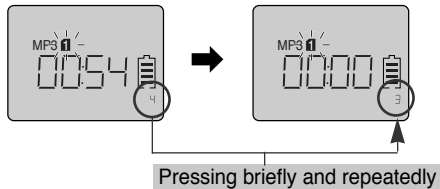
To return to the beginning of the current or previous track

Press the ◀◀ button briefly once (●) to return to the beginning of the current track.



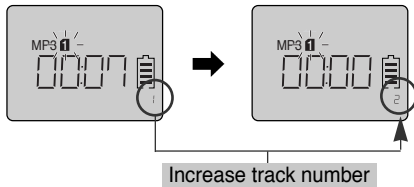
Press the ◀◀ button briefly and repeatedly to skip track(s) backward one by one.

PLAYING MP3 FILES



To skip tracks

Press the ►► button briefly and repeatedly to skip track(s) forward one by one.

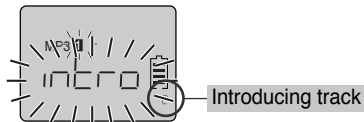


Intro Scan

Intro scan is the function that introduces the first 10 seconds only for each track of the MP3 files.

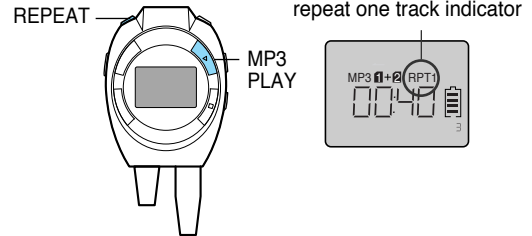
Press the ►► or ◀◀ button for about 2 seconds during MP3 file playing.

'intro' flashes on the display.



To play a current introducing track continuously, press the MP3 PLAY button.

Repeat Play



To play one track repeatedly

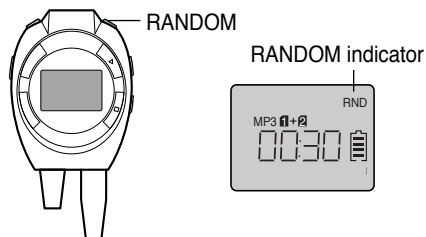
Press the RPT button briefly once during MP3 file playing, to display 'RPT1' on the display.

To cancel it, press the RPT button briefly once again.

PLAYING MP3 FILES

Random Play

Press the RANDOM button briefly once (●) during MP3 file playing. All the tracks on all cards (MMC1 and MMC2) in the compartment from the selected card can be played randomly.



To cancel random play

Press the RANDOM button briefly once so that RND indicator on the display goes out.

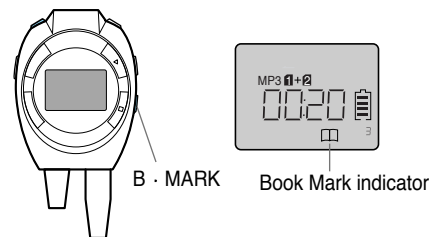
To skip tracks in the random play mode

Press the ►► or ◀◀ button is pressed, the next track is selected at random.

MP3 Book Mark function

If you set the Book Mark during MP3 file playing, you can search the set point of the track automatically.

① Press the B · MARK button briefly twice (●●), to display '📖', during MP3 file playing.



② During the other track or the other point of the set track playing press B · MARK button briefly once (●). The player automatically search and play the set point. It works in the current playing card only.

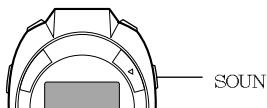
③ To cancel it, press the B · MARK button briefly and twice (●●) so that the '📖' disappears.

NOTES

► If the playing card is changed, the Book Mark setting is cancelled.

OTHER FUNCTIONS

Equalizer



To select your desired sound, press SOUND during playback.

- 1 Press SOUND once to select the "X-LIVE"
- 2 Press SOUND once again to select the normal.
("X-LIVE" will disappear in the display)

Specifications

MP3 Section

Frequency response	· · · · ·	20Hz~20kHz
Distortion	· · · · ·	·0.1%
Memory(Multimedia card)	· · · · ·	16MB or 32MB (extendable)

General

Power requirements	· · · ·	AAA/R6 battery(1.5V) Rechargeable battery(1.2V)
Output power	· ·	2.5mW+2.5mW(1kHz, 0dB/16 Ω)
Equalizer	· · · · ·	NORMAL/X-LIVE
Remote control jack	· · · · ·	φ3.5mm
Dimensions(W ×H ×D)	· · · · ·	71 ×95 ×19mm
Weight(except battery)	· · · · ·	·60g

Designs and specifications are subject to change without notice for improvement.